

# The NORTHWEST Rotary Tiller

As Used For The Bed Preparation And Cultivation  
Of Tomatoes And Other Row Crops



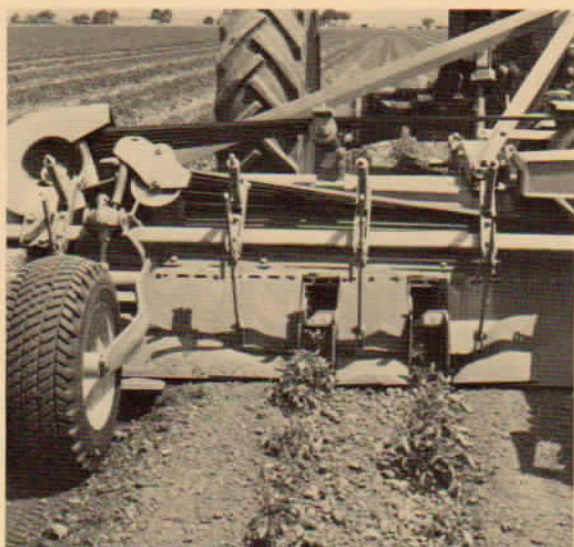
Near Tracy, California, a Northwest Rotary Tiller with chemical incorporator is cultivating three beds of tomatoes. The Tiller is working in rather cloddy conditions with the plants only about 3" to 6" high.



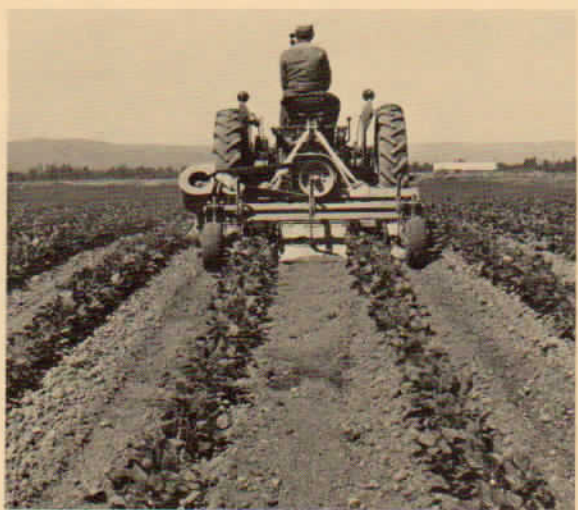
This is a view of one of the fields a few weeks later following irrigation. Note the vigorous plants and the fact that the bed shoulders have retained their proper shape.



Cultivating and incorporating 6 rows of sugar beets on 22' centers with an 11' Tiller Cultivator.



This close up of the Tracy operation shows the tunnel which protects the young tomato plants from dust, clods, etc.



Here, a 72" Tiller is working in lima beans near Vancouver, Washington. This is one of five different sized Northwest Rotary Tillers owned and used by one operator on 600 acres of varied crops.

**Northwest**  **Equipment**  
COMPANY

CALL OR WRITE: P. O. BOX 10473, YAKIMA, WASHINGTON 98909

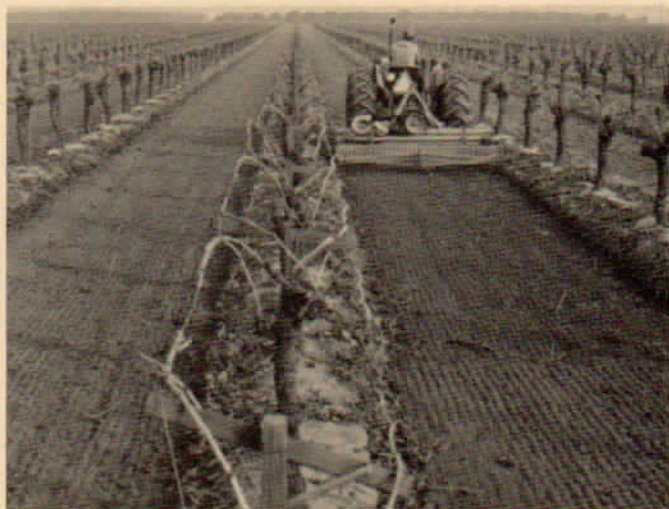
(509) 457-4108

# The NORTHWEST Rotary Tiller

## Rugged WITHOUT Excess Weight



The combination of a 12' Northwest Rotary Tiller and Mesh Roller produces a finished seed bed in a single pass while operating in heavy green corn stubble.



And 8' Northwest Vineyard Tiller near Fresno, California.



Here two 4 row Bedders retilling and reforming beds in a corn stubble field. The original beds were tilled and formed in the only previous operation.



A Model "L" 12' Tiller is shown following the combine and is incorporating 110 bushel per acre wheat stubble to a depth of 8".

For extra heavy duty tilling with up to 180 H.P. tractors,  
see the new Model "L" series.



CALL OR WRITE: P. O. BOX 10473, YAKIMA, WASHINGTON 98909

(509) 457-4108